

Direct Continuation 2014–2018

Scotch Oakburn College

	Numbers					Time Series	Percentage of Year 10 Cohort					Time Series	Trend Indicator	
	Year 10	2012	2013	2014	2015		2016	2012	2013	2014	2015			2016
	Year 12	2014	2015	2016	2017		2018	2014	2015	2016	2017			2018
Year 10 Cohort		115	109	128	102	107								
Year 11 Students		110	104	121	100	104		96%	95%	95%	98%	97%		0.4
Year 12 Students		106	101	117	99	102		92%	93%	91%	97%	95%		0.4
Achieved TCE		91	92	110	96	95		79%	84%	86%	94%	89%		-0.3
Achieved an ATAR		83	84	99	86	92		72%	77%	77%	84%	86%		3.2
Attained VET Certificate		13	12	10	21	6		11%	11%	8%	21%	6%		-5.4

Student Background

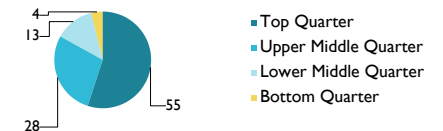
Index of Community Socio-Educational Advantage (ICSEA)

	2013	2014	2015	2016
School ICSEA Value	1125	1131	1118	1119

Distribution of Students (2016)

Bottom	Middle	Top
4%	13%	28%
		55%

2016 School ICSEA



Explanatory Notes

Direct Continuation: a student must achieve at least 1 credit point towards their TCE in the next year to be considered a direct continuation. The study can be at any Tasmanian school or Registered Training Organisation.

Year 10 Cohort: Students registered with TASC at the school.

Year 11 Students: Students who directly continued into Year 11 in the year after Year 10.

Year 12 Students: Students who directly continued into Year 12 two years after Year 10.

TCE: Of the Year 12 students, the number of students who attained the Tasmanian Certificate of Education.

ATAR: Of the Year 12 students, the number of students who attained an Australian Tertiary Admission Rank.

VET: Of the Year 12 students, the number of students who attained a Vocational Education and Training Certificate.

Values of NR: Not reported for results based on cohorts of fewer than 5 students in Year 12.

Trend indicators balance short-term change from the previous year, with longer-term change over five years. These are calculated using the average of the three slopes for Year 10 cohorts from 2015-2016, 2014-2016, and 2012-2016. Values where this average slope exceeds $\pm 1.0\%$ per year are highlighted.

ICSEA: The index of community socio-educational advantage (ICSEA) was created by the Australian Curriculum, Assessment and Reporting Authority (ACARA). ICSEA provides an indication of the socio-educational backgrounds of students. ICSEA isn't a school rating. ICSEA is a scale which allows for fair and reasonable comparisons among Australian schools with similar students. Values are standardised for Australia, with an average of 1000 and standard deviation of 100. Values lower than 900 are in the bottom 16% of Australian values, and values lower than 950 are in the bottom 31% of Australian values. Further information is available at

<http://www.acara.edu.au>. **Values of ND:** No ICSEA Data is not available for the school.