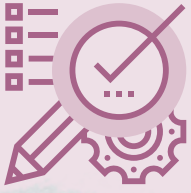


UNDERSTANDING ASSESSMENT



Assessment describes student progress and achievement in learning.

Assessment happens continuously as Year 11 and 12 students undertake TASC Courses.

At the end of the year learners are given their overall award for the course.

TYPES OF ASSESSMENT

TASC Courses are assessed using the defined set of criteria for that specific course to identify the extent of learner achievement at the end point of their study.

Some courses have **internal assessment only** and some have both **internal and external assessment**:

- Preliminary Course
- Level 1 Course
- Level 2 Course



Internal Assessment only

For a course that is internally assessed only, all the assessment is done by the classroom teacher.

The number and type of internal assessments depend on the course and the teacher.

There are baseline internal assessment requirements outlined in the [Course Document](#) under 'Work Requirements'.

- Level 3 Course
- Level 4 Course



Internal & External Assessment

For a course that includes external assessment (such as a written or oral exam, folio or practical assessment) that external assessment is marked by one (or more) other Markers, who are often Tasmanian teachers who are teaching that course at their school.

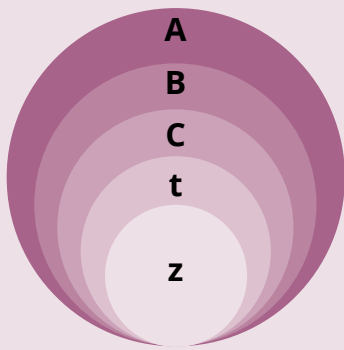
The external assessment details are outlined in the [Course Document](#) under 'External Assessment Requirements'.

Even in courses that include external assessment, the largest proportion of the overall award is from the internal assessment by the classroom teacher.



Criterion achievement ratings

The criteria for all courses (Preliminary and Level 1 to Level 4) and what learners who are achieving an A-C rating can do is outlined in the Course Document under 'Standards'.



A-C is detailed in the Course Document
't' is achievement less than a C
'z' provided no evidence of achievement

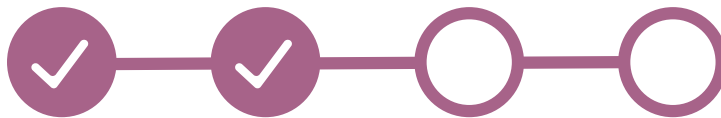
Overall award for a course

The ratings a learner receives during the course determines what overall award learners will receive for that course.

The combination of ratings needed for each award is detailed in the Course Document under 'Award Requirements'. This shows the number of ratings needed to receive each overall award:

- ★★★★★ Exceptional Achievement (EA)
- ★★★★ High Achievement (HA)
- ★★★ Commendable Achievement (CA)
- ★★ Satisfactory Achievement (SA)
- ★ Preliminary Achievement (PA)

Keeping track of assessment progress



Learners can keep track of how they are going in their course assessments during the year:

- Teachers will assess submitted work against the relevant criteria, criterion elements and standards and provide a rating for each internal assessment during the year.
- At the end of the year, schools are required to give students a copy of their internal ratings (before the school sends those ratings to TASC).
- TASC issues all students undertaking TASC Courses with a Statement of Results in mid-December each year. The Statement of Results includes the overall award for each course.
- Students who receive their results by email also receive a Course Criterion Profile Statement with details of the internal and external ratings for each criterion in the course.

QUESTIONS?



OFFICE OF TASMANIAN
ASSESSMENT, STANDARDS
& CERTIFICATION

- Your teacher can answer any questions you have about the assessments for the course and the ratings you have been awarded.
- Your school will have a process in place for you to request a review of your internal assessments.
- TASC has an inspections process for you to inspect your marked written exam material.
- The TASC website includes the Course Documents and information about results queries. See the [Your Results](#) page. If you still have a query, register it using the online form at www.tasc.tas.gov.au as soon as possible after receiving your results.



