

# TASC PRINCIPAL AND TLO FORUM

---

February 2022



OFFICE OF TASMANIAN  
ASSESSMENT, STANDARDS  
& CERTIFICATION

# AGENDA

---

Welcome/Agenda

2021 Data

Term 1 Start-up

TASC Every day adult standards –  
safety net testing

Areas of  
Interest

General  
Queries



OFFICE OF TASMANIAN  
ASSESSMENT, STANDARDS  
& CERTIFICATION

## 2021 PRELIMINARY DATA REPORTS

- Provided 15 December 2021
  - Updated data will be provided early March
  - Access this excel file via [TRACS](#) > Provider > Contact Info > Reports tab > click download
- “[TRACS How to... access preliminary results data](#)”

## TASC CROSS SECTOR DATA WORKING GROUP

### Internal Vs External Differences Report

- Being sent out via TRACS this week



FINDINGS



RECOMMENDATIONS



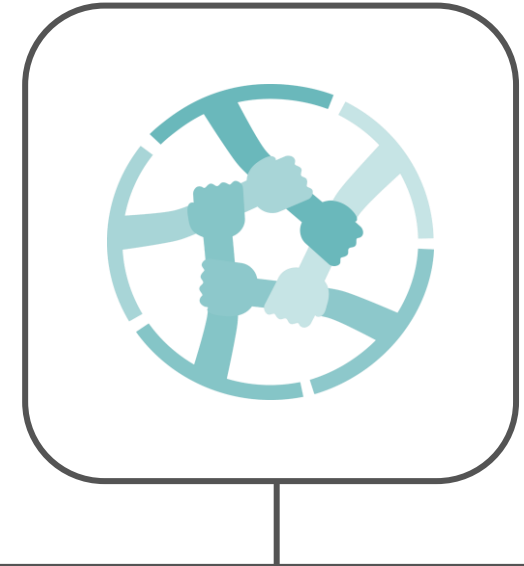
DELIVERY



Any questions?

# TAKE THE STAND

## Actioning the Standards for Providers of TASC Courses



### What are the Standards for Providers?

The [Standards for Providers](#) are the ongoing requirements for schools

They ensure:

- consistency and comparability of courses
- results, fairness and equity for students
- that the qualifications issued are valid and reliable.

### What is *Take the Stand*?

- A focus on the 10 Standards for Providers
- What *they* mean in practice
- how *they* benefit students, teachers, schools and the Tasmanian education system

### Why are we doing *Take the Stand*?

- TASC is both a regulator and an advocate of the Standards for Providers.

### RESOURCES

[Standards for providers – TASC](#)

# TAKE THE STAND

## Actioning the Standards for Providers of TASC Courses



### FOCUS AREAS BY TERM

For general reference only, not a comprehensive listing of all responsibilities under the Standards for Providers set under the Office of Tasmanian Assessment, Standards and Certification Act 2003.

SCHOOL



TEACHER



#### YEAR ROUND

- Keep lesson-by-lesson attendance records (in-class and logbooks/timesheets for outside class).
- Keep student enrolment details in TRACS up-to-date and accurate (enrolment changes close at end of August each year).
- Manage student movement between courses, and ensure the school policy on how course content and work requirements of the new course are completed is understood and practiced by all staff.
- Keep full and up-to-date assessment records on an official and centralised system, including an articulated final assessment rubric that clearly indicates how final judgements are made for each criterion.
- Ensure assessment records are protected from unauthorised access or loss using a centralised location.

#### TERM 1

Annual registration and scope of courses to be delivered by your school:

- Register with TASC to deliver TASC accredited courses
- Register the school's scope of courses in TRACS as part of the school registration process.

Teaching and assessing TASC courses:

- Access the course document, and plan the delivery and assessment of the course, including scope and sequence and assessment matrix (and unit/lesson plans as appropriate).
- Check that enrolled students meet any access and work requirements for that course.
- Ensure there is a variety of assessment methods used.
- Develop marking guides/tools for consistency of assessment.

#### TERM 1 continued

- Check that planned individual assessment tasks clearly note the criteria (and standard elements if appropriate) to be assessed.
- Ensure the school Academic Integrity Policy is actively used in classroom practice and students understand:
  - the Academic integrity requirements
  - how internal breaches and late submission of work is managed.
- Submit materials to TASC for desktop audit as per course requirements (Work Readiness Level 2, Project Implementation Level 2 and Student Directed Enquiry Level 3).
- Participate in Regional Quality Assurance Workshops and Desktop Audits of courses/providers as selected by TASC.

#### TERM 2

- Ensure unexplained absences are managed and students with prolonged absences are supported to catch up in their learning.
- Focus on internal moderation, ensuring course standards are consistently applied and maintaining reliability and comparability of internal assessment.
- Monitor students' folio development process to develop sufficient knowledge of each students' work as the basis for signoff of folio authenticity.

#### Start of TERM 3

- Continue to include information from the Academic Integrity Guide in discussions and course work, and check the integrity of work submitted for assessment (i.e. reverse Google search to look for plagiarism).
- Ensure enrolment changes are actioned before close of enrolment in end of August each year.
- Maintain awareness of - and respond to - data and analysis, including feedback from TASC Quality Assurance Meeting Reports, Level 3 & Level 4 internal/external rating data and Moderation Days.
- Participate in TASC Quality Assurance Meetings for the selected courses, including being fully prepared with all

#### Late TERM 3 & 4

- Complete any reviews of the academic integrity of folios before submission to TASC for external assessment.
- Provide students with their final internal ratings to sign off before submission via TRACS.
- Complete any requested review of internal ratings in a fair and just manner, and keep records of the process.
- Ensure all final internal ratings are reported to TASC and verified before the due dates in Term 4.



[Focus Areas BY TERM - \(tasc.tas.gov.au\)](https://tasc.tas.gov.au)



OFFICE OF TASMANIAN  
ASSESSMENT, STANDARDS  
& CERTIFICATION



## 2022 TASC Accredited Courses:

- available on the [TASC Courses page](#)
- including the five newly accredited courses – [courses accredited from 2022](#)
- a small number of courses were renewed for accreditation in 2022 with minor amendments – [course renewal of accreditation with amendments](#)



## 2021 Assessment Reports - Level 3 and Level 4 TASC courses

- available on relevant course document page under ‘Supporting documents, including external assessment material’

## 2022 TERM 1 START-UP

### ALL SCHOOLS

- **Registration:** registering with TASC is annual function that must be completed by the Principal in TRACS (open until Friday 18 February 2022)
- **Submitting School Scope:** list of TASC courses being taught at the school in the current year (open until Friday 25 February 2022)

### CATHOLIC AND INDEPENDENT SCHOOLS

- 2022 school and student enrolment data spreadsheets due to TASC Friday 11 March 2022

2022 Enrolments will be live in TRACS from Thursday 31 March 2022



## 2022 TERM 1 START-UP

### RELEVANT SCHOOLS

- **Quality Assurance requirements:** Work Readiness, Student Directed Inquiry and Project implementation – [course specific desktop audits](#)
- **Pre-Year 11 enrolment applications:** provided to TASC as soon as possible  
[Policy statement](#) and [Application form](#)

Submit via [TRACS](#) – TASK type ‘QA related query’



Any questions?

## Tasmanian Certificate of Education (TCE)

### TCE Standards

To achieve the TCE, you need to meet all of the TCE standards:

#### Participation and Achievement Standard:

120 credit points (with at least 80 credit points in studies at Level 2 or higher).

#### Everyday Adult Standards:

- Reading, Writing and Communication (in English)
- Mathematics
- [Use of Computers and the Internet.](#)



MORE INFORMATION ABOUT ONLINE TESTING OPPORTUNITIES  
Available soon.

## How do our students access a *paper-based* safety-net tests?

- You are a testing centre and have or can request paper-based safety net tests for your students
- The student is a dual enrolment and can access a safety net test at their other 'campus'
- Your school is a member of a collective and can contact another neighbouring centre to access testing opportunities
- You can contact TASC via TRACS and register your student/s. TASC will provide student specific support.





## Three ways to receive recognition of the Everyday Adult Standard – *Use of Computers and the Internet*

1. Gaining a Satisfactory Achievement (or higher) in one of the 16 TASC courses that have the standard included in the course
2. Having passed the Use of Computers and the Internet Standard safety net test
3. **APPROACH INTRODUCED IN 2021** – receiving recognition through the achievement of the other three standards

## Everyday Adult Standard – *Use of Computers and the Internet*

Receiving recognition of use of computers and the internet as part of the achievement of the other three TCE standards:

- Participation and Achievement Standard – 120 credit points (with at least 80 credit points in studies at Level 2 or higher).
- Everyday Adult Standard: Reading, Writing and Communication (in English)
- Everyday Adult Standard: Mathematics.



## Can a student still obtain their TCE after they complete Year 12 if they successfully complete a safety net test?

- TASC will continue to accept safety net tests from schools until Friday 4 March 2022.



Any questions?



Welcome/Agenda

2021 Data

Term 1 Start-up  
(Operational)

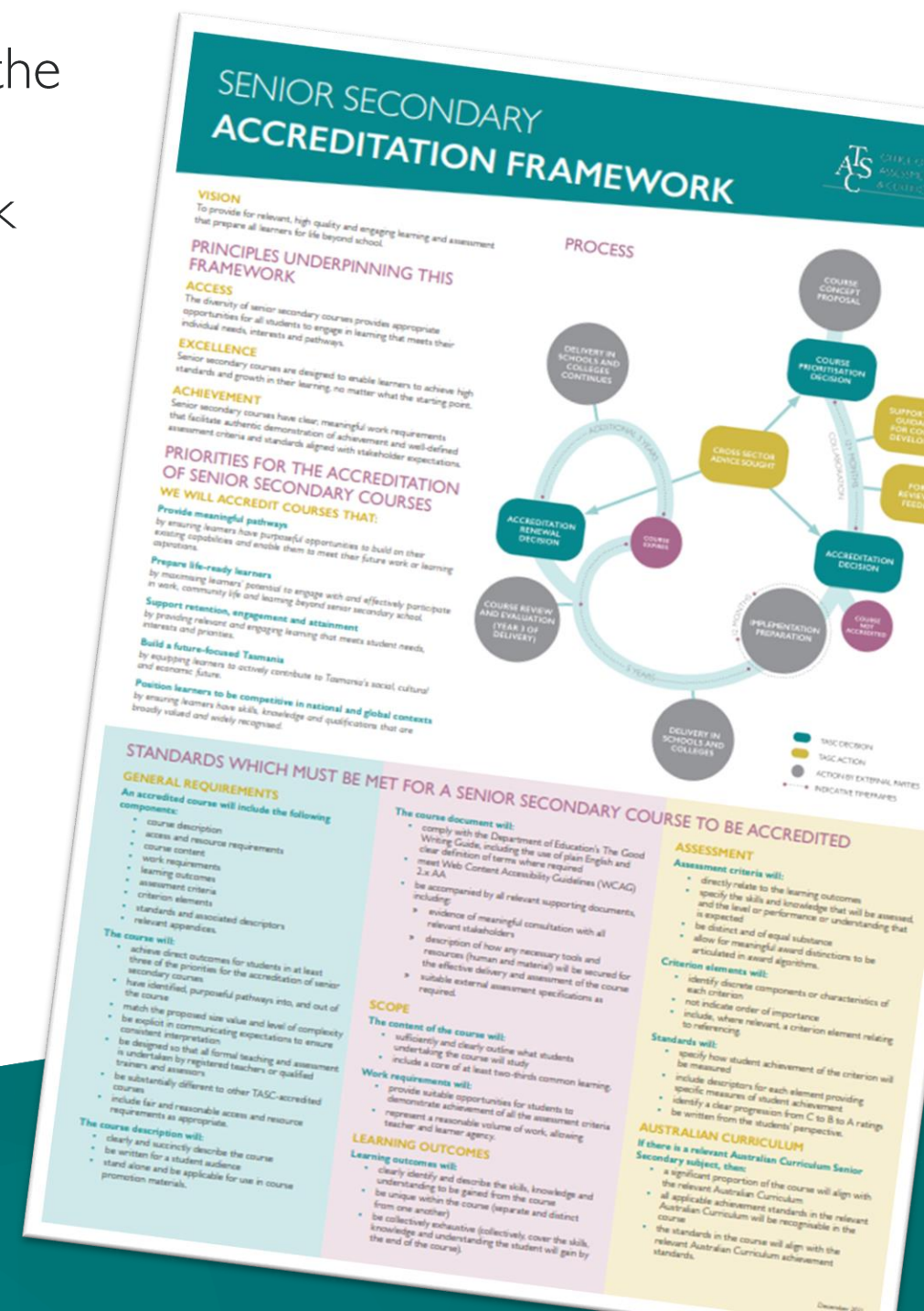
TASC Every day adult  
standards – safety net testing

Areas of  
Interest

General  
Queries

# SENIOR SECONDARY COURSE ACCREDITATION FRAMEWORK

- The framework was developed over 2021 with a review of the existing 3-page framework and development of a new accreditation framework in consultation with the Framework Advisory Council and 9-12 Learning.
- The new accreditation framework was approved by the Minister for Education in December 2021.



[Updated Senior Secondary Accreditation Framework - TASC](#)

## ADJUSTING TO THE ONGOING CIRCUMSTANCES OF COVID-19



### Five principles to guide our response to COVID-19 in 2022:

1. Students are entitled to receive meaningful learning and assessment opportunities that prepare them for their future pathways.
2. Qualifications, certificates and results issued by TASC in a year impacted by COVID-19 are comparable with those issued in other years.
3. Initiatives responding to the impacts of COVID-19 will be student-centred, proportionate, timely, fair and equitable.
4. Teachers' professional judgement and vital role in the success of senior secondary education in Tasmania continues to be valued.
5. Education sectors and key partners within the Department of Education are consulted in the development of specific initiatives to respond to the impacts of COVID-19 on teaching and learning.



Any questions?

Welcome/Agenda

2021 Data

Term 1 Start-up

TASC Every day adult standards – safety net testing

Areas of Interest

General Queries



# GENERAL QUERIES



OFFICE OF TASMANIAN  
ASSESSMENT, STANDARDS  
& CERTIFICATION

## REASONABLE ADJUSTMENTS | EXTERNAL ASSESSMENT

### Eligibility requirements

Students are eligible for reasonable adjustments on the following grounds:

- condition, impairment or disability as defined in the Disability Discrimination Act 1992 (DDA)
- refugee student status

**OPEN:** 7 March 2022

**CLOSE:** Tuesday 31 May

### School responsibilities

- School-based knowledge of impairment/disability and ongoing adjustments throughout learning
- Support to submit application for external assessment
- Understanding adjustment requirements to support students through the external assessment period
- Assistive technologies/equipment managed by the school



## EALD ACCESS REQUIREMENTS

### STUDENT ACCESS ELIGIBILITY

- English is a second language or an additional language or dialect; and
- Student has had no more than a total of six years of formal education in a school where English is the major language of instruction; and
- Student been a resident in Australia for no more than six calendar years immediately before January 1 of the year in which this course is to be taken
- [School information sheet](#)
- [Application to access EALD](#)

### [English as an Additional Language or Dialect - TASC](#)

Office of Tasmanian Assessment, Standards and Certification

Level 6, 39 Murray Street Hobart TAS 7000 Australia  
GPO Box 333 Hobart TAS 7001 Australia

P (03) 6165 6000 E [enquiries@tasc.tas.gov.au](mailto:enquiries@tasc.tas.gov.au) W [www.tasc.tas.gov.au](http://www.tasc.tas.gov.au)



---

OFFICE OF TASMANIAN  
ASSESSMENT, STANDARDS  
& CERTIFICATION

---