

TASC PRINCIPAL AND TLO FORUM

June 2022



OFFICE OF TASMANIAN
ASSESSMENT, STANDARDS
& CERTIFICATION

AGENDA

Welcome/
Agenda

Course
Accreditation
Update

TASC
cross-
sector data
working
group

Direct
Continuation
Reports

Mid-Year
Assessment
Period

2022 Student
Declarations

Reasonable
Adjustments

Operational
&
Area of Interest

General
Queries



OFFICE OF TASMANIAN
ASSESSMENT, STANDARDS
& CERTIFICATION

Course Accreditation – update



Increase in traffic on the TASC website:

- Traffic is focused on new courses for 2023
- More than 140,000 pages views in last 30 days (up 103%)
- Top page [Courses – TASC](#)
- Top referral site 11and12.education.tas.gov.au

Course Accreditation – update

Welcome/
Agenda

Course
Accreditation
Update

TASC
cross-
sector data
working
group

Direct
Continuation
Reports

Mid-Year
Assessment
Period

2022 Student
Declarations

Reasonable
Adjustments

Operational
&
Area of Interest

General
Queries



New courses in 2023

21 courses have been accredited for delivery in 2023:

- Five (5) Level 1 courses
- Twelve (12) Level 2 courses
- Four (4) Level 3 courses

Of these:

- Nine (9) are contemporary new courses
- Twelve (12) are evolutions of previous courses
- Five (5) have everyday adult standards embedded:
 - One (1) – Reading, Writing and Communication (in English)
 - Four (4) – Mathematics

[Courses accredited from 2023 – TASC](https://education.tas.gov.au)
[Years 11 & 12 \(education.tas.gov.au\)](https://education.tas.gov.au)



OFFICE OF TASMANIAN
ASSESSMENT, STANDARDS
& CERTIFICATION

Update: TASC Cross-Sector Data Working Group

- Review and refinement of existing reports
- Pilot program for *Power BI*
- Attainment Reports
- Data literacy support – review and update *Explanatory Notes*



Direct Continuation Reports – School-level data reports

- Being uploaded into [TRACS](#) this week
- Schools to review to confirm accuracy in the data-sets
- If any discrepancies are found please contact TASC on enquiries@tasc.tas.com.au by Thursday 30 June 2022.

Preparing for exams

[back to Year 11](#)

All from Years 11 and 12

[TCE course planner](#) [Student queries](#) [Planning your studies](#) [Preparing for exams](#) [Your results](#)

Image courtesy of Hobart College - 2021

[Exam and assessment timetables](#)[More information](#)[Information about preparing for exams](#)[More information](#)[Adjustments and support](#)[More information](#)[Academic integrity and external assessment rules](#)[More information](#)[Student declaration](#)[More information](#)[Notice of Enrolment & TASC ID Code](#)[More information](#)[Exam lead up](#)[More information](#)[Exam kit \(what to bring\)](#)[More information](#)

Mid-Year Assessments

- Entirely at the discretion of the school and mid-year assessments may operate differently at each school
- Student-centred approach - useful practise for the end of year, external assessment

- Academic integrity and external assessment rules
- Student declaration
- Exam lead up
- Exam kit (what to bring)

Mid-Year Assessments

WRITTEN EXAMS:

Tips for Getting Prepared



Getting Prepared for Exams

- 'reading time' being refocused as preparation time
- using one consistent term for exam paper parts/sections (and examples of what this heading change looks like using modified versions of last year's exam papers)

STUDENTS ENROLLED IN LEVEL 3 & 4 COURSES:
GETTING PREPARED FOR 2022 WRITTEN EXAMS

Some things go better when you are prepared!

Tips for Getting Prepared

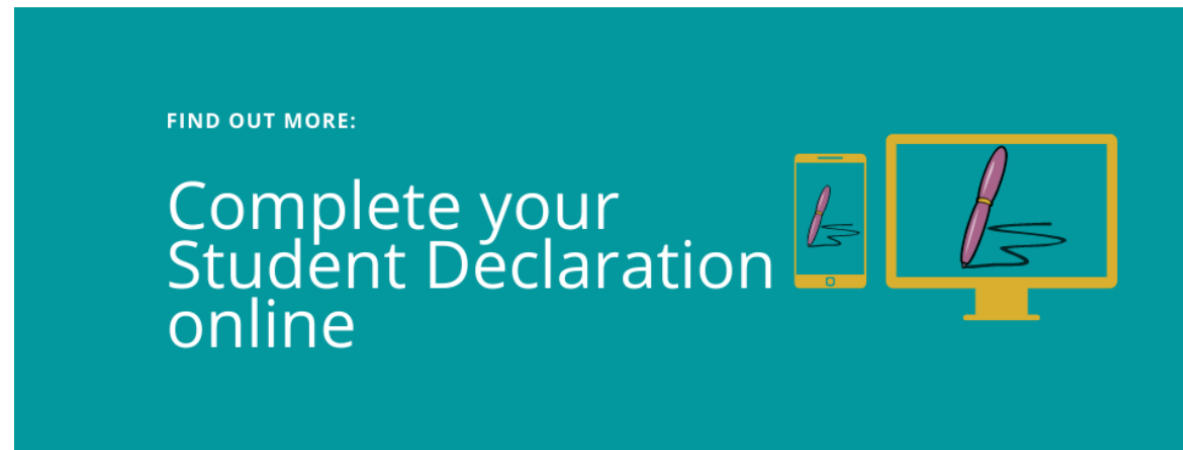
- 1. Know your Course and how you are assessed**
To do:
 - ✓ refer to the [Course details on the TASC website](#)
 - ✓ complete your class work and internal assessments
 - ✓ see the infosheet [Understanding Assessment](#)
 - ✓ watch the video [Understanding Year 11-12 ratings & awards](#)
- 2. Be familiar with your external assessment and assessment rules**
To do:
 - ✓ look up the previous exam papers and assessment reports (refer to the [Course details on the TASC website](#) and locate the exam papers and reports in the Course Document under the heading 'Supporting Documents')
 - ✓ talk with your teacher about the external assessment for your course
 - ✓ read the *Student Exam Guide*. In Term 3, your school will provide you with the printed guide including the exam timetables and assessment rules.
- 3. Practice (and ask for help) to master the skills and knowledge you need**
To do:
 - ✓ use your mid-year exams to prepare for exam conditions
 - ✓ use the resources available such as past exam papers and information on [Study Tips](#) and [Managing Exam Stress](#)
 - ✓ ask for any help and support you need to feel confident and prepared.
- 4. Stay cool, calm and focussed during your exam**
To do:
 - ✓ have your Notice of Enrolment 'pink slip' with you
 - ✓ follow the Exam Supervisor's instructions
 - ✓ use the preparation time at the start of the exam to review what is in the exam paper and make notes
 - ✓ plan your approach to the exam on the notes sheet provided (remembering the notes sheet isn't marked)
 - ✓ read all exam questions carefully to make sure you answer them correctly and in full
 - ✓ use the entire working time for your exam (checking your responses if you finish early.)

See the next page for key things to be aware of for the 2022 exams

Getting Prepared for 2022 Written Exams
Page 1 of 2
Version 1.0 – April 2022

ATS OFFICE OF TASMANIAN
ASSESSMENT STANDARDS
& CERTIFICATION

Student Declaration



- A Student Declaration must be completed by all students* who are undertaking one or more TASC courses.
- Students agree to comply with the TASC academic integrity requirements when completing the student declaration.

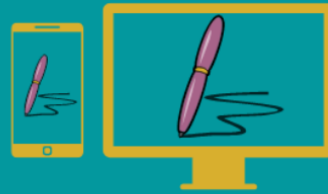
[Student Declaration - TASC](#)

Overview of the Student Declaration process:

- The online Student Declaration is a two-step process – a confirmation is sent to the student's nominated email address following submission of the Student Declaration.
- TASC IDs may be accessed via the TCE progression reports spreadsheet, individually via TRACS or for DoE schools via *Edi*.
- Access the *Home School Student Personal Details report* from TRACS.

FIND OUT MORE:

Complete your Student Declaration online



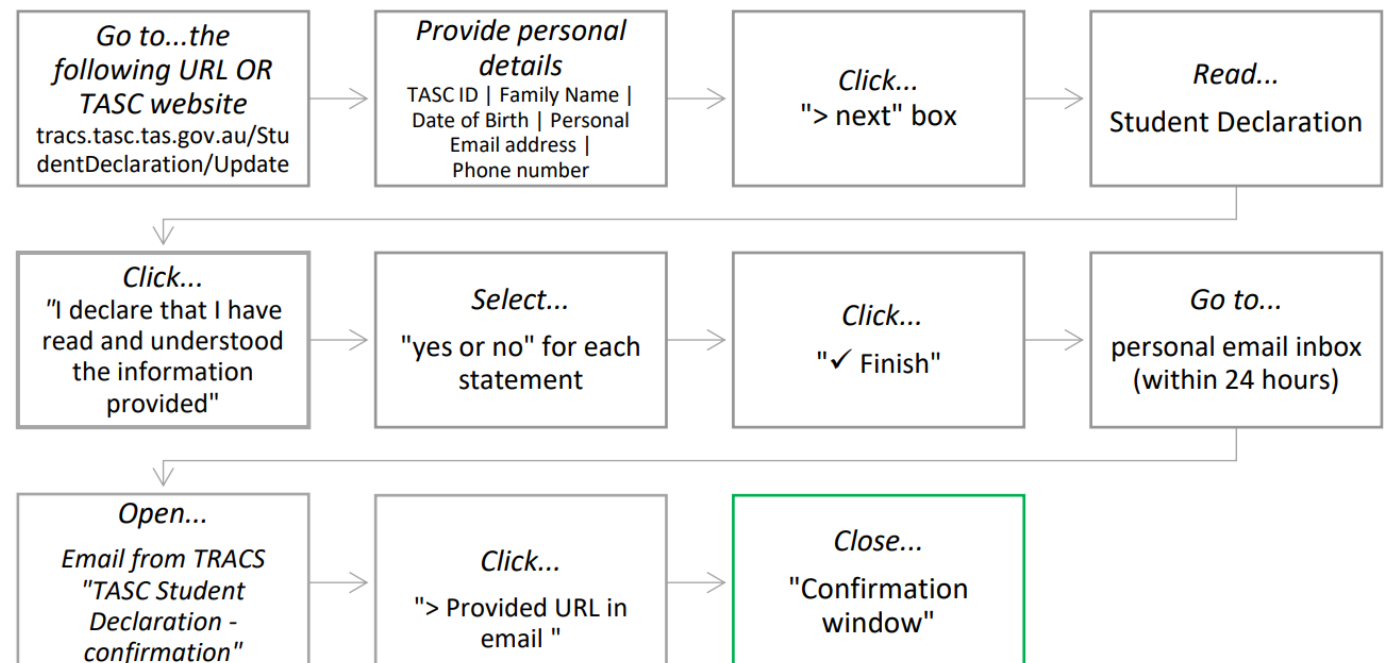
★ [How to...complete a Student Declaration](#)

How to...complete a student declaration

This is for:

- schools: students, TASC Liaison Officers, home group teachers, school support staff, etc.

Quick version:



Student Declaration

- Accessing the *Home School Student Personal Details report* from TRACS.
- [TRACS - Portal \(tasc.tas.gov.au\)](https://tasc.tas.gov.au)

TRACS

Supporting students to achieve

PREPROD - Portal

NAOMI COLBECK

/TLO

Help

HOME

PROVIDER

STUDENTS

CLASSES

STAFF

ASSESSMENT

UPLOADS

REPORTS

HOME SCHOOL STUDENT PERSONAL DETAILS (EXCEL)

HOME SCHOOL STUDENT PERSONAL DETAILS (PDF)

HOME

Upcoming Events

No upcoming events

Correspondence

Student Declaration

Home School Student Personal Details report



TASC High School - Home School Student Personal Details

HOME GROUP	YEAR LEVEL	STUDENT NAME	TASC ID	BIRTH DATE	MAILING ADDRESS	EMAIL ADDRESS	PHONE	STUDENT DEC	HAS EXAMS
HG1	11	Amelia Arrow	22A12345	01/01/2005	Hobart Road, Hobart, Tas 7001	amelia.arrow@gmail.com	412345678	Y	Y
HG2	12	Brad Brown	21B12345	01/02/2004	Hobart Avenue, Hobat, TAS 7001		423456789		Y
HG3	11	Charlie Crow	22C12345	01/03/2005	Hobart Street, Hobart, TAS 7001		423456790		Y
HG4	12	Denise Dragon	21D12345	01/04/2004	Hobart Place, Hoabrt TAS 7001	d.dragon@student.tasc.tas.edu.au	423456791	Y	Y



TASC High School - Home School Student Personal Details

HOME GROUP	YEAR LEVEL	STUDENT NAME	TASC ID	BIRTH DATE	MAILING ADDRESS	EMAIL ADDRESS	PHONE	STUDENT DEC	HAS EXAMS
HG1	11	Amelia Arrow	22A12345	01/01/2005	Hobart Road, Hobart, Tas 7001	amelia.arrow@gmail.com	412345678	Y	Y
HG2	12	Brad Brown	21B12345	01/02/2004	Hobart Avenue, Hobat, TAS 7001		423456789		Y
HG3	11	Charlie Crow	22C12345	03/01/2005	Hobart Street, Hobart, TAS 7001		423456790		Y
HG4	12	Denise Dragon	21D12345	01/04/2004	Hobart Place, Hoabrt TAS 7001	d.dragon@student.tasc.tas.edu.au	423456790	Y	Y



REASONABLE ADJUSTMENTS | EXTERNAL ASSESSMENT

Personal circumstances/ Misadventure

[Reasonable Adjustments - TASC](#)

Personal circumstances eligibility:

- Death of a close family member
- Religious or cultural practices/obligations

Misadventure eligibility:

- An injury resulting in a non-permanent functional impairment
- Involvement in an accident resulting in a non-permanent functional impairment

OPENED: 1 July 2022

CLOSE: Friday 21 October

- Use form RA3
- Upload Reasonable Adjustment applications against the individual student

Operational update: Exam centre allocations

- 2022 Written Exam Schedule – published end of August
- Exam centre allocation details will be requested, where relevant
- Clashes and four (4) exams back-to-back will be resolved automatically



Preparation time in externally assessed written exams - TASC

Operational update - Sessional Staffing:

- Applications for Markers close on Friday 17 June 2022
- Applications to be an Observer in 2022 close on Friday 17 June 2022
- Exam Supervisor Coordinators and Exam Supervisor applications open Monday 20 June



Welcome/
Agenda

Course
Accreditation
Update

TASC
cross-
sector data
working
group

Direct
Continuation
Reports

Mid-Year
Assessment
Period

2022 Student
Declarations

Reasonable
Adjustments

Operational
&
Area of Interest

General
Queries

AREA OF INTEREST

National or Interstate Assessed Languages (NIAL)

making connections across schools



OFFICE OF TASMANIAN
ASSESSMENT, STANDARDS
& CERTIFICATION

Welcome/
Agenda

Course
Accreditation
Update

TASC
cross-
sector data
working
group

Direct
Continuation
Reports

Mid-Year
Assessment
Period

2022 Student
Declarations

Reasonable
Adjustments

Operational
&
Area of Interest

General
Queries



GENERAL QUERIES

Office of Tasmanian Assessment, Standards and Certification

Level 6, 39 Murray Street Hobart TAS 7000 Australia
GPO Box 333 Hobart TAS 7001 Australia

P (03) 6165 6000 E enquiries@tasc.tas.gov.au W www.tasc.tas.gov.au



OFFICE OF TASMANIAN
ASSESSMENT, STANDARDS
& CERTIFICATION
